

Appendix



SUPPORTING MATERIAL A.1 DEFINING POVERTY

Canada's unofficial definition of poverty is based on Statistics Canada's Low Income Cut-offs (LICOs).¹ The Canadian Council on Social Development (CCSD) supports the use of this measure to define poverty. As discussed in the *Introduction* of this report, Statistics Canada itself does not define its LICOs as poverty lines, but instead refers to people in households with incomes below LICO as living in "straitened circumstances." However, most people who comment on poverty agree that living in straitened circumstances in a wealthy country such as Canada constitutes relative income poverty. LICOs are also good indicators of the public's perception of poverty, as discussed in the *Introduction*.²

Poor households in this report have been identified using pre-tax LICOs. In calculating the LICOs, Statistics Canada begins by estimating the percentage of gross income spent by the average household on food, clothing and shelter. It then somewhat arbitrarily marks this up by 20 percentage points. Statistics Canada reasons that if a household spends 20 percentage points more of its income on these three essentials than the average Canadian household spends, it is a low-income household.

As shown in Table A.1A, identifying households living below the LICO takes into account the size of the family and the size of the community in which they reside – the larger the household, the greater the amount of income needed to support it. Adjusting for community size is

based on the assumption that the cost of living increases with the size of the community. Information on spending patterns used in the construction of the LICOs is gathered from the Survey of Family Expenditures. The LICOs for the 1995 income year are based on spending patterns in 1992 that are adjusted upwards to 1995 dollars using the Consumer Price Index.³

In addition to the LICO assessments, all income-related data discussed in this report also refer to pre-tax income. As well, income data from the 1996 Census are drawn from 1995. As such, all income refers to 1995 annual income, but population characteristics refer to 1996.

This report focuses primarily on the situation facing people living in metropolitan areas with a population of at least 100,000. As such, households are identified as poor by comparing their total income to the appropriate LICO for their family size in either of the first two columns in Table A.1a. In 1995, the LICOs in Column 1 were used to identify poverty rates for persons in

households in metropolitan areas with populations over 500,000, including Québec, Montréal, Ottawa-Hull, Toronto, Hamilton, Winnipeg, Calgary, Edmonton and Vancouver. The LICOs in Column 2 were used for persons living in households in St. John's, Halifax, Cape Breton, Saint John, Chicoutimi-Jonquière, Sherbrooke, Trois-Rivières, Oshawa, St. Catharines-Niagara, Kitchener, London, Windsor, Sudbury, Thunder Bay, Regina, Saskatoon and Victoria.

Readers should be aware that there are limitations to using the LICOs as a relative measure of poverty. One of the more serious criticisms leveled at the LICO is that it does not adequately reflect differences in the costs of living in different metropolitan areas. For example, rents in Montréal and Toronto may differ widely, but the same LICO lines are used to identify low-income households in both areas.

TABLE A.1A
1995 LOW INCOME CUT-OFFS (1992 BASE)

Size of family unit	Urban areas				Rural areas
	500,000 and over	100,000 to 499,999	30,000 to 99,999	Less than 30,000	
1 person	\$16,874	\$14,473	\$14,372	\$13,373	\$11,661
2 persons	\$21,092	\$18,091	\$17,965	\$16,716	\$14,576
3 persons	\$26,232	\$22,500	\$22,343	\$20,790	\$18,129
4 persons	\$31,753	\$27,235	\$27,046	\$25,167	\$21,944
5 persons	\$35,494	\$30,445	\$30,233	\$28,132	\$24,530
6 persons	\$39,236	\$33,654	\$33,420	\$31,096	\$27,116
7 or more persons	\$42,978	\$36,864	\$36,607	\$34,061	\$29,702

As such, low-income households in Montréal may actually be using less of their income to cover essential shelter costs than do households in Toronto. However, indicators suggest that this is not the case. Shelter costs comprise the largest part of most households' expenditures,⁴ and poor tenant households in major cities spend about the same percentage of their income on rent. Table A.1B shows that, on average, poor tenant households in the Communauté-urbaine-de-Montréal, the City of Toronto, and the Greater Vancouver Regional District spent between 47.0 and 49.1 per cent of their annual income on shelter costs. While actual rents in these cities may differ, the proportions of household income dedicated to rent are quite similar.

In addition, the use of averages to establish the cut-offs helps to mitigate differences in local spending patterns. Because the LICOs are based on the

TABLE A.1B
ANNUAL RENT AS A PER CENT OF
HOUSEHOLD INCOME, POOR
HOUSEHOLDS, SELECTED
GEOGRAPHIES, 1995

	Annual rent as % of household income
Communauté-urbaine-de-Montréal	47.0
City of Toronto	48.7
Greater Vancouver Regional District	49.1

Source: Prepared by the Canadian Council on Social Development using Statistics Canada's 1996 Census, custom tabulations.

income and spending of an average Canadian household and adjusted to community size, expenditures of households in all large urban centres are taken into account. As such, local costs of living are reflected through the use of an average. Furthermore, comparisons based on expenditures at geographic levels below the metropolitan area would result in similar concerns. As shown in Chapter 1, poverty rates differ as much within metropolitan areas as they do among metropolitan areas. LICOs that were based solely on local expenditures would not allow for comparisons between metropolitan areas and would still be subject to criticisms that they do not sufficiently reflect differences in incomes and costs of living in different parts of each urban area.

Further support for using the LICOs to define poverty comes from a 1999 CCSD study by David Ross and Paul Roberts which examined income as a determinant of child development. In the study, the authors examined 27 different elements of child development, including family functioning, neighbourhood safety, aggression, health status, math and vocabulary scores, and participation in sports and clubs. They found that the level of family income was a key factor in healthy child development. In 80 per cent of the variables examined, the risks of negative child outcomes and the likelihood of poor living conditions were noticeably higher for children living in families with annual income

below \$30,000. This was also true for half of the variables examined for children living in families with income below \$40,000 per year.

These findings strongly reinforce the idea that family income is closely linked to child development. If incomes are below a certain level, the authors suggest that children will face "a poverty of opportunity," because they will not have the same opportunities granted to other children in society. If one of the primary reasons for addressing poverty is to support the development of healthy children, these findings indicate a poverty line that is based on sound criteria. For a family of four with children, Ross and Roberts suggest a poverty line between \$30,000 and \$40,000. This is higher than the comparable LICO, which ranges from approximately \$21,000 to \$31,000 for 1997. Since that is below the figures recommended by Ross and Roberts for healthy child development, the use of the LICOs for urban poverty research is justified on this basis.

Given the limitations of the LICOs, they may not be a perfect measure of poverty. However, they do serve as good indicators of the low-income circumstances of Canadians and unhealthy environments for child development, and they allow for historical comparisons of low income. For these reasons, the LICOs are used as income measures in this research.

Endnotes

- ¹ For further discussion on definitions of poverty, see the National Council of Welfare, *A New Poverty Line: Yes, No, Maybe? A Discussion Paper*. Ottawa: Minister of Public Works and Government Services Canada, 1999. Also see David P. Ross, Katherine J. Scott, and Peter J. Smith, *The Canadian Fact Book on Poverty 2000*. Ottawa: Canadian Council on Social Development, 2000.
- ² R. Gary Edwards and John Hughes. *The Gallup Poll*, Vol. 57, No. 26. Toronto: Gallup Canada, May 13, 1997. See the *Introduction* for details.
- ³ The LICOs for the 1990 income year are based on spending patterns for 1986, then adjusted for inflation. Although 1995 LICO data using the 1986 base year are available, they were not used in this report. It was felt that the establishment of low-income status should reflect the most recent spending patterns that could be applied, not those of nine years earlier.
- ⁴ According to Statistics Canada's 1996 Survey of Family Expenditures, 34 per cent of monthly expenditures of couples with children under age 15 were for shelter costs. For lone-parent families with children under 15, 43 per cent of monthly expenditures were for shelter costs.

A . 2 D A T A S O U R C E S

The research for this report was conducted using custom tabulations of Census data from 1991 and 1996. Data are presented on the nation, provinces, census metropolitan areas (CMAs), urban non-CMA areas, census divisions (CDs), census subdivisions (CSDs), and census tracts (CTs) for persons in private households. The 1996 Census data were ordered from Statistics Canada as part of the CCSD's Urban Poverty Project, which involved multiple partners from metropolitan areas across Canada. Some figures in this report were also drawn from other Statistics Canada sources, such as standard Census products, the Labour Force Survey, and the Survey of Consumer Finances.

Data on persons in the Yukon and Northwest Territories, on Indian reserves, and in institutions and collective households were not included in the report because the LICOs are not calculated for these locations and situations. Spending patterns in the Territories and on reserves are considered to be too different from those of the rest of the country to calculate a comparative measure. Similarly, persons in institutions and collective dwellings have spending patterns that differ substantially from other Canadian households. As well, the Survey of Family Expenditures is not administered in those areas nor for people living in those situations.

In reviewing this report, readers should keep in mind the time period that the research covers. Most of the data used in this study are drawn from the 1996 Census of Canada, administered in June 1996. All income information shown for that year refers to 1995 income, the year prior to the Census. These data were chosen for the study because they offer one of the best sources of comparable social and economic data for Canadian cities.

A . 3 DISCUSSION OF GEOGRAPHIC UNITS

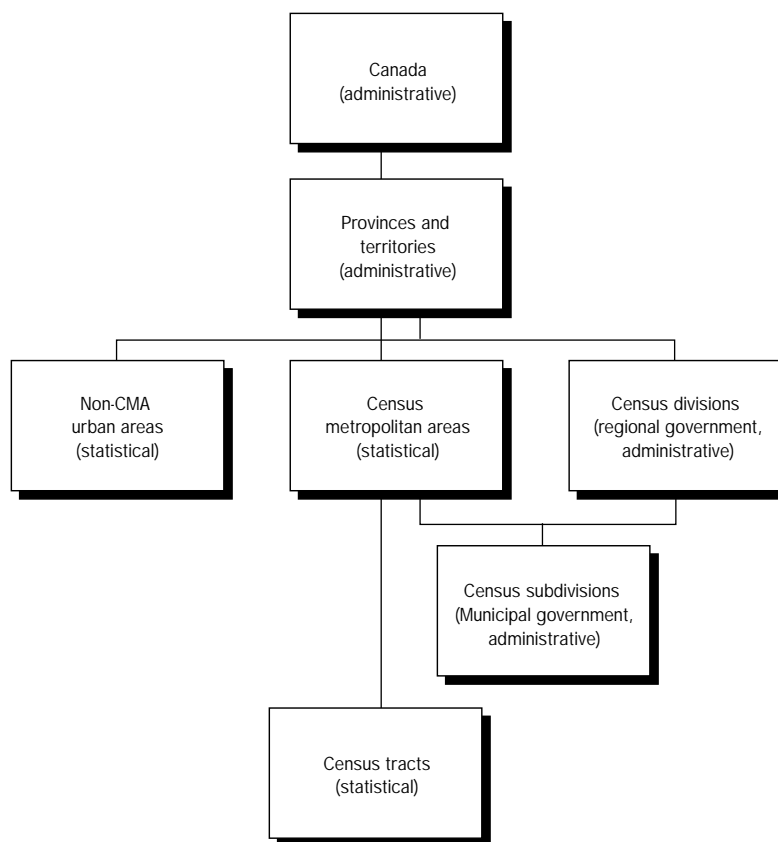
Urban Canada can be difficult to define. How large must a community be before it is considered to be an urban area? Is an urban area defined by municipal boundaries? Does it include people living beyond the city limits adjacent to a municipality? Is an urban area a community with a certain density of households? All of these questions are relevant when deciding on an approach to study urban areas in Canada.

Data used in this report are organized by *geographic units* or *areas*, which refer to a defined spatial area in Canada. The boundaries of these units or areas are either administratively or statistically defined. With few exceptions, administrative units are defined by federal or provincial statutes. For example, the geographic boundaries of the City of Winnipeg are defined by a Province of Manitoba statute. Boundaries for statistically defined geographic units are established by Statistics Canada using a standard formula, often based on commuting patterns of the resident population. To varying degrees, this report uses six sets of overlapping standard geographic units – both administratively and statistically defined – in its analysis. These include: the nation, the provinces, the census metropolitan area (CMA), the census division (CD), the census subdivision (CSD), and the census tract (CT). Custom geographic units – non-CMA urban areas – are also included in this analysis. Figure A.1 shows the relationships between each of these sets of geographic units. The figure is organized hierarchically, with the largest geographic area (Canada) at the highest level. The lines connecting geographic units indicate that lower-level areas are component parts of higher-level areas. For example, CSDs are component parts of both CMAs and CDs.

One of the most popular of Statistics Canada's geographies that is used to examine urban areas is the census metropolitan area (CMA). It is defined as "a very large urban area (known as the urban core), together with adjacent urban and rural areas (known as urban and rural fringes) that have a high degree of social and economic integration with the urban core. A CMA has an urban core population of at least 100,000, based on the previous Census."¹ CMAs are defined in this manner to provide a boundary to local economic activity. By delineating an area according to its workforce, it is assumed that people involved in the

area's economic activity are, by and large, within that CMA boundary. Although the CMA definition of large urban areas has its advantages, it also has limitations. One of the most serious limitations is that the units of analysis can become too large to be meaningful. For example, the CMA of Toronto encompasses 29 municipalities stretching over 5,868 square kilometres and has a population of over 4.2 million people. Within this area, however, are unique circumstances and economies of the component administrative regions and municipalities. One of the fundamental uses of the CMA in this report is to

FIGURE A.1
RELATIONSHIP BETWEEN STANDARD GEOGRAPHIC UNITS



Source: Prepared by the Canadian Council on Social Development using Statistics Canada's 1996 *Census Dictionary* (geography), 1997, Catalogue No. 92-351-XPE.

identify and focus the research on the largest urban areas in Canada. All 25 CMAs and one census agglomeration (CA) are used in *Chapter 1*.²

In many respects, census divisions (CDs) are a useful alternative to CMAs in examining large urban areas. CDs are defined by provincial legislation as an intermediate level of government between municipalities and provincial governments. CDs include counties, regional districts, municipal regions and other types of regionally defined areas. Regional governments are intended to coordinate the delivery of services best administered at the regional level, particularly when these services address issues that cross individual municipal boundaries. A comparative analysis of poverty is useful at the CD level because social services are often delivered by this level of government, particularly in Ontario. By their very nature, regional governments can develop approaches to deal with issues in a manner specific to their region. Poverty, as the research in this report shows, certainly carries regional implications. As well, residents of large urban areas can identify boundaries of regional districts more readily than those of CMAs.

Unfortunately, boundaries of CDs are neither uniformly constructed across the country, nor do they necessarily reflect economic activity. Boundaries are not based on standard formulas of population density or size. In some provinces, a CD might encompass an

urban area in addition to large rural areas. Some administrative regions border on large urban areas to which they are strongly connected through industry and commuting. Provincial laws in Newfoundland, Manitoba, Saskatchewan and Alberta do not provide for these administrative geographic areas. Although CDs in those provinces are created by Statistics Canada in cooperation with the provincial governments for the purposes of “the dissemination of statistical data,” the creation of these geographic units does not follow a consistent set of rules. For these reasons, regional districts are not the optimal units for making inter-urban comparisons. Nonetheless, 29 CDs in or overlapping CMAs were selected for examination in *Chapter 1*.

This report focuses most extensively on large census subdivisions (CSDs) as the unit of analysis to compare urban poverty. The CSDs selected for analysis are provincially defined municipalities with populations over 100,000 within CMAs. For example, the city of Vancouver is a large CSD in the CMA of Vancouver. If there are no CSDs with a population greater than 100,000 in the CMA, the largest CSD within the CMA is included. Also, CSDs which overlap the historic core of a CMA are included in the study group. For example, Hull is a selected city even though its population is less than 100,000 because it is part of the traditional metropolitan core of the Ottawa-Hull CMA. This selection criteria isolates 47 of these municipalities in

Canadian CMAs.³ These CSDs serve as geographic units for comparison in all chapters of this report.

The selected CSDs are appropriate units for comparison because they represent a manageable number of sub-units of CMAs or CDs for analysis. Although their boundaries are not consistently defined, they are the largest and generally the most densely populated components of any CMA or CD. At the same time, they can be considered small enough to be meaningful to residents and to capture differences in local populations and sub-economies within a larger area. Centrally located CSDs often contain both the largest amount of economic activity and the highest concentrations of poverty in an area. Furthermore, the isolation of the selected cities within CMAs or CDs aids the understanding of relative differences in poverty rates between central areas and the adjacent suburban municipalities within each metropolitan area.

Finally, census tracts (CTs) are used in *Chapter 1* to assess neighbourhood concentrations of poverty in metropolitan areas. CTs are “small geographic units representing urban or rural neighbourhood-like communities created in census metropolitan areas and census agglomerations.” The population of CTs ranges from a minimum of 2,500 to a maximum of 8,000. Due to their size, CTs allow for analysis at a much lower-level geography than other units used in this report.

Endnotes

- ¹ Census subdivisions (CSDs) adjacent to an urban core can only be included in a CMA if one of a number of criteria are met. These criteria include the Forward Commuting Flow Rule, which states that at least 50 per cent of the employed labour force living in the CSD work in the urban core; and the Reverse Commuting Flow Rule, which states that at least 25 per cent of the employed labour force working in the CSD live in the urban core. Statistics Canada, *Census Dictionary*, Catalogue No. 92-351-XPE. Ottawa: Industry Canada, 1997.
- ² The CA of Cape Breton is also included in the analysis. While not recognized as a CMA, the CA of Cape Breton has a population of over 117,000 and is therefore comparable in size to many of the other CMAs included in this study.
- ³ The CSD of Cape Breton in the CA of Cape Breton is included in the 47 selected CSDs. This CSD (Cape Breton RGM) has a population of over 100,000.

A . 4 P O V E R T Y R A T E C O R R E L A T I O N

The standardization technique used in this report has established that certain variables in the composition of a city's population can have an influence on that city's poverty rate. Here, a series of bi-variate Pearson correlation analyses are used to complement the standardization

technique. Using cities to represent cases, they show the degree of association between the proportion of a selected group in a city population and that city's poverty rate. In other words, they measure the tendency of these two variables to co-vary. For example, one correlation

analysis shows the association between the proportion of children in a city's population and the city's poverty rate.

This procedure calculates a correlation coefficient ranging from +1.000 and -1.000.

TABLE A.2
PEARSON CORRELATION COEFFICIENTS FOR BIVARIATE ANALYSES OF CITY POVERTY RATE AND PROPORTION OF SELECTED VARIABLES IN CITY POPULATION, 1995

Selected variable	Pearson correlation coefficient	Significance (2-tailed)
0 - 14 years old	-0.700**	0.000
15 - 24 years old	0.078	0.600
25 - 34 years old	0.389**	0.007
35 - 44 years old	-0.097	0.518
45 - 54 years old	-0.216	0.145
55 - 64 years old	0.242	0.102
65 - 74 years old	0.409**	0.004
75 years and older	0.393**	0.006
Couples with no children under 18	-0.596**	0.000
Couples with children under 18	-0.698**	0.000
Lone-parent families with children under 18	0.366**	0.011
All other families	0.581**	0.000
Unattached men	0.667**	0.000
Unattached women	0.656**	0.000
Canadian-born	0.168	0.258
Non-permanent resident	0.452**	0.001
Immigrated before 1986	-0.377**	0.009
Immigrated 1986 - 1990	-0.074	0.620
Immigrated 1990 - 1996	0.129	0.387
Visible minority persons	0.040	0.792
Aboriginal persons	0.013	0.930
Persons with disabilities	0.130	0.384
With less than secondary certificate	0.187	0.208
With secondary certificate	-0.285*	0.052
With post-secondary certificate	-0.097	0.518
With no employment in 1995	0.621**	0.000
With employment part-year, full- or part-time	0.399**	0.005
With employment full-year, part-time	-0.519**	0.000
With employment full-year, full-time	-0.691**	0.000
With Skill level I	0.307*	0.036
With Skill level II	-0.179	0.228
With Skill levels III & IV	-0.023	0.876

Notes: Procedure used was a Pearson correlation analysis.

* Correlation is significant at the 0.05 level (2-tailed).

** Correlation is significant at the 0.01 level (2-tailed)

Source: Prepared by the Canadian Council on Social Development using data from Statistics Canada's 1996 Census, custom tabulations.

➔ The closer the variables follow the same pattern (i.e., the stronger the positive correlation), the closer the coefficient is to +1.000. For example, a strong positive correlation shows that if one variable has a high value, the other variable is also likely to have a high value.

➔ The closer the variables follow patterns in the opposite direction (i.e., the stronger the negative correlation), the closer the coefficient is to -1.000. For example, a strong negative correlation shows that if one variable has a low value, the other variable is likely to have a high value.

➔ The closer the coefficients are to zero, the less they follow any corresponding pattern. In other words, there is little or no association between the variables.

Although a correlation coefficient shows the strength of the relationship between two variables, it does not in any way prove causality (i.e., that a change in one variable causes change in another). However, a strong correlation shows a relationship that may suggest the possibility of causality. As well, these coefficients alone cannot explain differences in city poverty rates, but they might help identify factors that are associated with these differences.

Table A.2 shows Pearson correlation coefficients for city poverty rates and the local share of selected groups in the population. Coefficients for these relationships are shown in the first column of the table. The second column shows the two-tailed significance of these coefficients. Readers should note that many of the coefficients are not significant at either the 0.01 level or the 0.05 level (i.e., the chance that the correlation occurred by error is greater than either 1 per cent or 5 per cent, respectively).

Among the significant coefficients, city poverty rates were most strongly

positively correlated with the proportions of unattached men (0.667) and women (0.656), "other" families households (0.581), and working-age persons with no annual employment (0.621). In other words, the more these characteristics were prevalent in the population, the greater the likelihood of higher city poverty rates. City poverty rates were most strongly negatively correlated with the proportion of children under age 15 (-0.700), two-parent families with children under age 18 (-0.698), couples with no children under age 18 (-0.596), working-age persons with full-time full-year employment (-0.691), and working-age persons

with full-year part-time employment (-0.519). In other words, the more these characteristics were prevalent in the population, the less likelihood of higher city poverty rates. These coefficients suggest that although children as a group had among the highest poverty rates, cities with higher proportions of children and couples (with and without children) tended to have lower city poverty rates. As well, the results suggest that cities with larger proportions of full-year workers tended to have lower city poverty rates.

A . 5 S U P P O R T I N G T A B L E S

TABLE A.3
ACTUAL CITY POVERTY RATES,
SHOWING POVERTY RATES
RESULTING FROM TARGETED
POVERTY REDUCTION FOR
CHILDREN, BY CITY, 1995

	Actual poverty rate	Adjusted poverty rate	% point difference
ALL CITIES	24.5	23.0	1.4
Montréal	41.2	39.2	2.0
Québec	34.7	33.5	1.2
Vancouver	31.0	29.7	1.3
Trois-Rivières	30.8	29.6	1.2
Longueuil	30.3	28.6	1.7
Sherbrooke	29.7	28.4	1.3
Hull	29.2	27.8	1.4
Ottawa	28.3	26.6	1.6
Burnaby	27.8	26.5	1.3
Toronto	27.6	26.0	1.7
Hamilton	27.6	25.9	1.7
Saint John	27.0	25.2	1.7
Richmond	26.0	24.5	1.4
Edmonton	26.0	24.4	1.7
Victoria	25.1	24.2	0.9
Halifax	24.5	23.3	1.2
Cape Breton	25.0	23.2	1.7
Winnipeg	24.3	22.8	1.5
Jonquière	23.5	22.4	1.1
St. John's	23.4	22.1	1.3
Saskatoon	22.8	21.2	1.6
Coquitlam	22.3	20.9	1.4
Chicoutimi	21.6	20.7	1.0
Laval	21.4	20.2	1.2
Sudbury	21.2	19.9	1.3
Surrey	21.4	19.8	1.6
Calgary	20.6	19.3	1.3
Windsor	19.6	18.4	1.3
Gatineau	19.5	18.3	1.3
London	18.8	17.5	1.2
Regina	18.3	17.0	1.3
Niagara Falls	18.2	17.0	1.3
St. Catharines	17.8	16.7	1.1
Richmond Hill	17.5	16.5	1.1
Kitchener	16.8	15.6	1.2
Mississauga	16.4	15.2	1.2
Oshawa	16.3	15.1	1.2
Thunder Bay	15.3	14.3	1.0
Markham	14.6	13.7	0.9
Nepean	14.1	13.0	1.1
Cambridge	13.7	12.7	1.0
Brampton	13.6	12.6	1.0
Gloucester	13.6	12.5	1.1
Saanich	12.9	12.2	0.7
Vaughan	12.1	11.3	0.8
Burlington	10.4	9.7	0.6
Oakville	9.9	9.3	0.6

Note: Adjusted poverty rates assume a poverty rate 25% lower than the actual rate for children aged 0-14.

Source: Prepared by the Canadian Council on Social Development using data from Statistics Canada's 1996 Census, custom tabulations.

TABLE A.4
ACTUAL CITY POVERTY RATES,
SHOWING POVERTY RATES
RESULTING FROM TARGETED
POVERTY REDUCTION FOR YOUTH,
BY CITY, 1995

	Actual poverty rate	Adjusted poverty rate	% point difference
ALL CITIES	24.5	23.4	1.0
Montréal	41.2	39.5	1.7
Québec	34.7	33.2	1.4
Vancouver	31.0	29.6	1.4
Trois-Rivières	30.8	29.2	1.5
Longueuil	30.3	29.0	1.3
Sherbrooke	29.7	28.0	1.7
Hull	29.2	27.9	1.3
Ottawa	28.3	26.9	1.4
Toronto	27.6	26.6	1.0
Hamilton	27.6	26.5	1.1
Burnaby	27.8	26.5	1.3
Saint John	27.0	25.7	1.2
Richmond	26.0	24.9	1.1
Edmonton	26.0	24.8	1.2
Cape Breton	25.0	24.0	1.0
Victoria	25.1	23.7	1.4
Winnipeg	24.3	23.3	1.0
Halifax	24.5	23.0	1.5
Jonquière	23.5	22.4	1.0
St. John's	23.4	22.1	1.4
Saskatoon	22.8	21.4	1.4
Coquitlam	22.3	21.4	0.9
Laval	21.4	20.7	0.7
Chicoutimi	21.6	20.7	0.9
Surrey	21.4	20.6	0.8
Sudbury	21.2	20.1	1.2
Calgary	20.6	19.6	1.0
Gatineau	19.5	18.8	0.8
Windsor	19.6	18.7	0.9
London	18.8	17.8	1.0
Niagara Falls	18.2	17.6	0.6
Regina	18.3	17.3	1.0
St. Catharines	17.8	17.1	0.8
Richmond Hill	17.5	16.8	0.7
Kitchener	16.8	16.0	0.8
Mississauga	16.4	15.8	0.6
Oshawa	16.3	15.6	0.7
Thunder Bay	15.3	14.6	0.7
Markham	14.6	13.9	0.7
Nepean	14.1	13.4	0.7
Cambridge	13.7	13.1	0.6
Brampton	13.6	13.1	0.5
Gloucester	13.6	13.1	0.6
Saanich	12.9	12.2	0.7
Vaughan	12.1	11.6	0.5
Burlington	10.4	10.0	0.3
Oakville	9.9	9.5	0.4

Note: Adjusted poverty rates assume a poverty rate 25% lower than the actual rate for youth aged 15-24.

Source: Prepared by the Canadian Council on Social Development using data from Statistics Canada's 1996 Census, custom tabulations.

TABLE A.5
ACTUAL CITY POVERTY RATES,
SHOWING POVERTY RATES
RESULTING FROM TARGETED
POVERTY REDUCTION FOR LONE-
PARENT FAMILIES, BY CITY, 1995

	Actual poverty rate	Adjusted poverty rate	% point difference
ALL CITIES	29.5	28.5	1.0
Montréal	46.1	45.0	1.2
Québec	42.4	41.5	0.9
Trois-Rivières	39.3	38.2	1.1
Sherbrooke	37.2	36.0	1.1
Vancouver	36.5	35.9	0.6
Longueuil	35.2	33.8	1.4
Hull	34.6	33.5	1.1
Hamilton	33.2	31.9	1.3
Saint John	31.7	30.1	1.6
Ottawa	31.5	30.6	0.9
Burnaby	31.2	30.6	0.7
Toronto	30.9	29.8	1.0
Edmonton	30.7	29.7	1.1
Jonquière	30.6	29.6	1.0
Winnipeg	30.2	29.2	1.0
Victoria	30.0	29.3	0.7
Cape Breton	29.8	28.0	1.8
St. John's	29.7	28.4	1.3
Halifax	29.6	28.6	1.0
Chicoutimi	28.9	28.1	0.8
Saskatoon	28.3	27.1	1.2
Sudbury	27.5	26.3	1.2
Richmond	26.8	26.2	0.6
Laval	25.8	25.0	0.8
Calgary	25.3	24.6	0.7
Surrey	25.0	23.9	1.1
Gatineau	24.9	23.8	1.1
Coquitlam	24.9	24.1	0.8
Windsor	24.4	23.3	1.1
London	23.4	22.4	1.0
Regina	22.9	21.8	1.1
St. Catharines	22.9	21.9	1.0
Niagara Falls	22.6	21.5	1.1
Thunder Bay	20.6	19.6	1.0
Kitchener	20.5	19.5	0.9
Oshawa	20.2	19.0	1.2
Richmond Hill	19.2	18.7	0.5
Mississauga	18.6	17.9	0.7
Saanich	17.8	17.2	0.6
Cambridge	17.6	16.6	1.0
Markham	16.5	16.1	0.4
Nepean	16.2	15.4	0.7
Brampton	16.0	15.3	0.7
Gloucester	15.4	14.5	0.9
Vaughan	14.6	14.4	0.3
Burlington	14.1	13.6	0.5
Oakville	13.3	12.9	0.4

Note: Adjusted poverty rates assume a poverty rate 25% lower than the actual rate for lone-parent families.

Source: Prepared by the Canadian Council on Social Development using data from Statistics Canada's 1996 Census, custom tabulations.

TABLE A.6
ACTUAL CITY POVERTY RATES,
SHOWING POVERTY RATES
RESULTING FROM TARGETED
POVERTY REDUCTION FOR
UNATTACHED INDIVIDUALS,
BY CITY, 1995

	Actual poverty rate	Adjusted poverty rate	% point difference
ALL CITIES	29.5	25.3	4.2
Montréal	46.1	38.8	7.3
Québec	42.4	35.1	7.3
Trois-Rivières	39.3	32.6	6.7
Sherbrooke	37.2	30.9	6.3
Longueuil	35.2	30.5	4.7
Vancouver	36.5	30.3	6.2
Hull	34.6	29.3	5.3
Hamilton	33.2	28.7	4.5
Saint John	31.7	27.6	4.1
Toronto	30.9	27.0	3.9
Burnaby	31.2	26.9	4.4
Jonquière	30.6	26.7	3.9
Cape Breton	29.8	26.7	3.2
Ottawa	31.5	26.5	5.0
Edmonton	30.7	26.4	4.3
Winnipeg	30.2	25.8	4.5
St. John's	29.7	25.7	3.9
Chicoutimi	28.9	25.1	3.8
Halifax	29.6	24.6	5.0
Richmond	26.8	24.2	2.5
Victoria	30.0	24.0	5.9
Saskatoon	28.3	24.0	4.3
Sudbury	27.5	23.3	4.2
Laval	25.8	22.7	3.1
Surrey	25.0	22.2	2.8
Coquitlam	24.9	22.0	2.8
Gatineau	24.9	22.0	2.9
Calgary	25.3	21.6	3.7
Windsor	24.4	20.8	3.5
London	23.4	19.9	3.5
Niagara Falls	22.6	19.6	3.0
St. Catharines	22.9	19.6	3.3
Regina	22.9	19.6	3.3
Kitchener	20.5	17.7	2.7
Oshawa	20.2	17.7	2.5
Richmond Hill	19.2	17.5	1.7
Thunder Bay	20.6	17.5	3.1
Mississauga	18.6	16.9	1.7
Cambridge	17.6	15.5	2.1
Markham	16.5	15.2	1.3
Saanich	17.8	14.8	3.0
Brampton	16.0	14.5	1.5
Nepean	16.2	14.3	1.9
Gloucester	15.4	13.8	1.6
Vaughan	14.6	13.6	1.1
Burlington	14.1	12.1	2.0
Oakville	13.3	11.5	1.8

Note: Adjusted poverty rates assume a poverty rate 25% lower than the actual rate for unattached individuals.

Source: Prepared by the Canadian Council on Social Development using data from Statistics Canada's 1996 Census, custom tabulations.

TABLE A.7
ACTUAL CITY POVERTY RATES,
SHOWING POVERTY RATES
RESULTING FROM TARGETED
POVERTY REDUCTION FOR RECENT
IMMIGRANTS, BY CITY, 1995

	Actual poverty rate	Adjusted poverty rate	% point difference
ALL CITIES	24.5	23.5	0.9
Montréal	41.2	39.9	1.3
Québec	34.7	34.5	0.2
Trois-Rivières	30.8	30.7	0.1
Longueuil	30.3	29.9	0.4
Sherbrooke	29.7	29.4	0.3
Vancouver	31.0	29.2	1.8
Hull	29.2	28.6	0.6
Ottawa	28.3	27.2	1.1
Hamilton	27.6	27.0	0.5
Saint John	27.0	27.0	0.0
Toronto	27.6	25.9	1.8
Burnaby	27.8	25.6	2.2
Edmonton	26.0	25.5	0.5
Cape Breton	25.0	24.9	0.0
Victoria	25.1	24.8	0.3
Halifax	24.5	24.1	0.4
Winnipeg	24.3	24.0	0.3
Jonquière	23.4	23.5	0.0
St. John's	23.4	23.3	0.1
Richmond	26.0	22.9	3.0
Saskatoon	22.8	22.6	0.2
Chicoutimi	21.6	21.6	0.0
Laval	21.4	21.2	0.2
Sudbury	21.2	21.2	0.1
Coquitlam	22.3	20.6	1.7
Surrey	21.4	20.5	0.9
Calgary	20.6	20.1	0.5
Gatineau	19.5	19.5	0.1
Windsor	19.6	19.1	0.5
London	18.8	18.3	0.4
Regina	18.3	18.1	0.2
Niagara Falls	18.2	18.1	0.2
St. Catharines	17.8	17.6	0.2
Kitchener	16.8	16.2	0.5
Oshawa	16.3	16.2	0.1
Richmond Hill	17.5	16.0	1.5
Mississauga	16.4	15.4	1.1
Thunder Bay	15.3	15.2	0.1
Cambridge	13.7	13.6	0.1
Nepean	14.1	13.5	0.6
Markham	14.6	13.2	1.4
Brampton	13.6	13.1	0.5
Gloucester	13.6	13.0	0.6
Saanich	12.9	12.7	0.2
Vaughan	12.1	11.7	0.3
Burlington	10.4	10.2	0.1
Oakville	9.9	9.7	0.2

Note: Adjusted poverty rates assume a poverty rate 25% lower than the actual rate for recent immigrants.

Source: Prepared by the Canadian Council on Social Development using data from Statistics Canada's 1996 Census, custom tabulations.

TABLE A.8
ACTUAL CITY POVERTY RATES,
SHOWING POVERTY RATES
RESULTING FROM TARGETED
POVERTY REDUCTION FOR VISIBLE
MINORITIES, BY CITY, 1995

	Actual poverty rate	Adjusted poverty rate	% point difference
ALL CITIES	24.5	22.4	2.0
Montréal	41.2	37.9	3.3
Québec	34.7	34.3	0.3
Trois-Rivières	30.8	30.6	0.2
Sherbrooke	29.7	29.3	0.4
Longueuil	30.3	29.3	1.0
Hull	29.2	28.4	0.8
Vancouver	31.0	27.1	3.9
Saint John	27.0	26.7	0.3
Hamilton	27.6	26.3	1.2
Ottawa	28.3	25.8	2.5
Cape Breton	25.0	24.9	0.1
Edmonton	26.0	24.5	1.6
Victoria	25.1	24.4	0.7
Burnaby	27.8	24.2	3.6
Toronto	27.6	23.8	3.8
Halifax	24.5	23.5	1.1
Jonquière	23.5	23.4	0.0
Winnipeg	24.3	23.3	1.0
St. John's	23.4	23.3	0.2
Saskatoon	22.8	22.3	0.5
Chicoutimi	21.6	21.6	0.0
Richmond	26.0	21.3	4.6
Sudbury	21.2	21.1	0.2
Laval	21.4	20.7	0.8
Coquitlam	22.3	19.6	2.7
Gatineau	19.5	19.3	0.2
Calgary	20.6	19.3	1.3
Surrey	21.4	19.2	2.1
Windsor	19.6	18.5	1.1
Niagara Falls	18.2	18.0	0.3
Regina	18.3	17.9	0.4
London	18.8	17.9	0.9
St. Catharines	17.8	17.3	0.5
Oshawa	16.3	16.0	0.3
Kitchener	16.8	15.9	0.8
Thunder Bay	15.3	15.2	0.1
Richmond Hill	17.5	15.2	2.4
Mississauga	16.4	14.3	2.1
Cambridge	13.7	13.3	0.4
Nepean	14.1	12.9	1.2
Saanich	12.9	12.3	0.5
Gloucester	13.6	12.3	1.3
Brampton	13.6	12.1	1.5
Markham	14.6	12.0	2.6
Vaughan	12.1	11.5	0.6
Burlington	10.4	10.1	0.2
Oakville	9.9	9.5	0.4

Note: Adjusted poverty rates assume a poverty rate 25% lower than the actual rate for visible minorities.

Source: Prepared by the Canadian Council on Social Development using data from Statistics Canada's 1996 Census, custom tabulations.

TABLE A.9
ACTUAL CITY POVERTY RATES,
SHOWING POVERTY RATES
RESULTING FROM TARGETED
POVERTY REDUCTION FOR
ABORIGINAL PERSONS, BY CITY, 1995

	Actual poverty rate	Adjusted poverty rate	% point difference
ALL CITIES	24.5	24.3	0.2
Montréal	41.2	41.2	0.0
Québec	34.7	34.6	0.1
Trois-Rivières	30.8	30.7	0.1
Vancouver	31.0	30.6	0.3
Longueuil	30.3	30.2	0.0
Sherbrooke	29.7	29.6	0.1
Hull	29.2	29.0	0.2
Ottawa	28.3	28.2	0.1
Burnaby	27.8	27.7	0.1
Toronto	27.6	27.6	0.0
Hamilton	27.6	27.4	0.2
Saint John	27.0	26.9	0.1
Richmond	26.0	25.9	0.1
Edmonton	26.0	25.4	0.6
Cape Breton	25.0	24.9	0.1
Victoria	25.1	24.8	0.3
Halifax	24.5	24.5	0.1
St. John's	23.4	23.4	0.0
Jonquière	23.5	23.4	0.1
Winnipeg	24.3	23.2	1.1
Coquitlam	22.3	22.2	0.1
Chicoutimi	21.6	21.6	0.1
Saskatoon	22.8	21.5	1.3
Laval	21.4	21.4	0.0
Surrey	21.4	21.2	0.2
Sudbury	21.2	20.8	0.5
Calgary	20.6	20.3	0.2
Windsor	19.6	19.5	0.1
Gatineau	19.5	19.4	0.1
London	18.8	18.6	0.2
Niagara Falls	18.2	18.1	0.1
St. Catharines	17.8	17.7	0.1
Richmond Hill	17.5	17.5	0.0
Regina	18.3	17.2	1.1
Kitchener	16.8	16.7	0.1
Mississauga	16.4	16.4	0.0
Oshawa	16.3	16.2	0.1
Thunder Bay	15.3	14.6	0.7
Markham	14.6	14.6	0.0
Nepean	14.1	14.0	0.0
Cambridge	13.7	13.7	0.0
Brampton	13.6	13.6	0.0
Gloucester	13.6	13.6	0.1
Saanich	12.9	12.8	0.1
Vaughan	12.1	12.1	0.0
Burlington	10.4	10.4	0.0
Oakville	9.9	9.9	0.0

Note: Adjusted poverty rates assume a poverty rate 25% lower than the actual rate for Aboriginal identity population.

Source: Prepared by the Canadian Council on Social Development using data from Statistics Canada's 1996 Census, custom tabulations.

TABLE A.10
ACTUAL CITY POVERTY RATES,
SHOWING POVERTY RATES
RESULTING FROM TARGETED
POVERTY REDUCTION FOR PERSONS
WITH DISABILITIES, BY CITY, 1995

	Actual poverty rate	Adjusted poverty rate	% point difference
ALL CITIES	24.4	23.5	0.9
Montréal	41.2	40.0	1.2
Québec	34.7	33.4	1.3
Vancouver	30.9	29.7	1.2
Trois-Rivières	30.8	29.6	1.2
Longueuil	30.2	29.2	1.0
Sherbrooke	29.6	28.4	1.2
Hull	29.2	28.1	1.1
Ottawa	28.3	27.1	1.2
Burnaby	27.8	26.9	0.9
Toronto	27.6	26.6	1.0
Hamilton	27.6	26.1	1.5
Saint John	26.9	25.4	1.6
Richmond	25.9	25.3	0.6
Edmonton	26.0	24.9	1.1
Victoria	25.1	23.7	1.4
Cape Breton	24.9	23.4	1.6
Halifax	24.4	23.3	1.1
Winnipeg	24.2	23.2	1.1
Jonquière	23.5	22.8	0.7
St. John's	23.4	22.5	0.9
Saskatoon	22.8	21.9	0.9
Coquitlam	22.3	21.6	0.6
Chicoutimi	21.6	20.9	0.7
Laval	21.4	20.8	0.6
Surrey	21.4	20.6	0.8
Sudbury	21.2	20.0	1.3
Calgary	20.6	19.8	0.8
Windsor	19.6	18.8	0.6
Gatineau	19.5	18.8	0.6
Windsor	19.6	18.6	1.0
London	18.8	17.9	0.9
Regina	18.3	17.6	0.7
Niagara Falls	18.3	17.4	0.9
Richmond Hill	17.5	17.0	0.5
St. Catharines	17.8	16.9	0.9
Kitchener	16.7	16.0	0.7
Mississauga	16.4	15.9	0.5
Oshawa	16.3	15.5	0.7
Thunder Bay	15.2	14.3	0.9
Markham	14.5	14.2	0.3
Nepean	14.1	13.6	0.4
Gloucester	13.6	13.2	0.4
Brampton	13.6	13.1	0.5
Cambridge	13.7	13.0	0.7
Saanich	12.9	12.3	0.5
Vaughan	12.0	11.6	0.4
Burlington	10.4	9.9	0.5
Oakville	9.9	9.6	0.4

Note: Adjusted poverty rates assume a poverty rate 25% lower than the actual rate for persons with disabilities.

Source: Prepared by the Canadian Council on Social Development using data from Statistics Canada's 1996 Census, custom tabulations.

TABLE A.11
ACTUAL CITY POVERTY RATES,
SHOWING POVERTY RATES
RESULTING FROM TARGETED
POVERTY REDUCTION FOR PERSONS
WITH NO HIGH SCHOOL CERTIFICATE,
BY CITY, 1995

	Actual poverty rate	Adjusted poverty rate	% point difference
ALL CITIES	23.2	20.2	3.0
Montréal	39.5	34.5	5.0
Québec	34.5	29.9	4.6
Vancouver	30.2	26.7	3.5
Trois-Rivières	30.3	26.1	4.2
Sherbrooke	28.9	25.2	3.6
Longueuil	28.6	24.3	4.3
Hull	28.2	24.2	4.1
Burnaby	26.9	23.8	3.0
Ottawa	26.0	23.2	2.8
Toronto	25.6	22.3	3.3
Richmond	24.9	22.1	2.7
Hamilton	25.7	21.7	4.0
Victoria	24.1	21.5	2.6
Edmonton	24.5	21.0	3.4
Saint John	24.8	20.8	3.9
Halifax	23.2	20.6	2.6
Jonquière	23.6	20.1	3.4
Winnipeg	22.8	19.3	3.5
St. John's	22.1	19.0	3.2
Chicoutimi	22.0	18.9	3.2
Coquitlam	21.2	18.7	2.5
Cape Breton	22.5	18.4	4.1
Saskatoon	21.0	18.3	2.7
Laval	20.5	17.5	3.0
Calgary	19.7	17.2	2.5
Surrey	19.7	16.8	2.8
Sudbury	19.5	16.7	2.9
Gatineau	18.8	15.8	3.0
Windsor	18.1	15.6	2.4
London	17.4	15.3	2.1
Richmond Hill	17.0	15.1	1.9
Regina	16.7	14.3	2.4
St. Catharines	16.5	14.2	2.3
Niagara Falls	16.4	14.0	2.4
Mississauga	15.0	13.2	1.8
Kitchener	15.2	13.0	2.2
Markham	14.1	12.5	1.5
Oshawa	14.6	12.2	2.4
Thunder Bay	14.0	11.8	2.2
Nepean	12.5	11.2	1.3
Saanich	12.2	10.9	1.3
Brampton	12.4	10.7	1.7
Cambridge	12.7	10.7	2.1
Gloucester	11.7	10.4	1.3
Vaughan	11.8	10.2	1.6
Oakville	9.6	8.5	1.1
Burlington	9.8	8.5	1.3

Note: Adjusted poverty rates assume a poverty rate 25% lower than the actual rate for the population with less than high school certificate.

Source: Prepared by the Canadian Council on Social Development using data from Statistics Canada's 1996 Census, custom tabulations.

TABLE A.12
ACTUAL CITY POVERTY RATES,
SHOWING POVERTY RATES
RESULTING FROM TARGETED
POVERTY REDUCTION FOR PERSONS
WITH NO ANNUAL EMPLOYMENT, BY
CITY, 1995

	Actual poverty rate	Adjusted poverty rate	% point difference
ALL CITIES	22.9	20.1	2.8
Montréal	39.3	33.9	5.3
Québec	33.6	29.2	4.4
Vancouver	29.9	26.4	3.5
Trois-Rivières	30.3	25.8	4.5
Sherbrooke	29.4	25.6	3.8
Ottawa	27.2	24.0	3.2
Victoria	26.0	23.5	2.5
Longueuil	27.5	23.5	4.0
Hull	27.2	23.5	3.7
Burnaby	26.5	23.1	3.4
Edmonton	24.4	22.1	2.3
Halifax	24.6	22.1	2.5
Saint John	25.5	22.0	3.5
Toronto	25.4	22.0	3.4
Hamilton	25.0	21.5	3.4
Richmond	24.5	21.3	3.3
Jonquière	23.3	19.7	3.6
Saskatoon	21.8	19.6	2.2
Winnipeg	21.7	19.4	2.3
St. John's	22.7	19.3	3.4
Cape Breton	23.1	19.0	4.1
Coquitlam	20.5	18.0	2.6
Calgary	19.4	17.9	1.5
Chicoutimi	20.8	17.7	3.1
Sudbury	20.1	17.3	2.8
Surrey	19.6	17.2	2.4
Laval	19.2	16.7	2.4
London	18.1	16.0	2.1
Windsor	18.2	15.8	2.4
Gatineau	17.8	15.5	2.4
Regina	17.0	15.2	1.8
St. Catharines	17.1	14.9	2.2
Niagara Falls	16.6	14.5	2.1
Richmond Hill	16.8	14.5	2.3
Kitchener	15.5	13.7	1.9
Mississauga	14.6	12.9	1.7
Oshawa	14.6	12.5	2.1
Markham	14.0	12.2	1.8
Thunder Bay	13.6	12.0	1.7
Saanich	13.2	11.9	1.3
Nepean	12.8	11.3	1.5
Cambridge	12.6	10.9	1.7
Brampton	11.9	10.6	1.3
Gloucester	11.6	10.2	1.4
Vaughan	11.3	9.9	1.4
Oakville	8.9	8.1	0.8
Burlington	8.4	7.6	0.8

Note: Adjusted poverty rates assume a poverty rate 25% lower than the actual rate for persons with no annual employment.

Source: Prepared by the Canadian Council on Social Development using data from Statistics Canada's 1996 Census, custom tabulations.

TABLE A.13
ACTUAL CITY POVERTY RATES,
SHOWING POVERTY RATES
RESULTING FROM TARGETED
POVERTY REDUCTION FOR LOW-
SKILLED WORKERS, BY CITY, 1995

	Actual poverty rate	Adjusted poverty rate	% point difference
ALL CITIES	15.5	14.6	0.9
Montréal	26.4	25.0	1.4
Québec	21.8	20.6	1.1
Vancouver	21.4	20.4	1.1
Victoria	19.7	18.6	1.1
Edmonton	19.3	18.2	1.1
Sherbrooke	19.2	18.0	1.2
Ottawa	18.9	17.9	1.0
Trois-Rivières	18.4	17.4	1.1
Halifax	18.1	17.1	1.0
Burnaby	17.3	16.5	0.8
Toronto	16.6	15.7	0.9
Hull	16.7	15.7	1.1
Longueuil	16.5	15.6	0.9
Saint John	16.4	15.3	1.1
Calgary	16.2	15.3	0.9
Saskatoon	15.9	15.0	1.0
Winnipeg	15.8	14.9	0.9
Richmond	15.5	14.9	0.6
Hamilton	15.7	14.6	1.1
Coquitlam	13.3	12.8	0.5
Jonquière	13.5	12.7	0.8
Surrey	13.5	12.7	0.9
Lava	12.8	12.1	0.6
Sudbury	12.5	11.6	0.9
St. John's	12.3	11.5	0.8
Chicoutimi	12.2	11.5	0.6
London	12.2	11.5	0.7
Regina	11.9	11.1	0.7
Windsor	11.6	10.8	0.8
Gatineau	11.3	10.6	0.7
St. Catharines	11.2	10.6	0.7
Niagara Falls	11.1	10.2	0.9
Cape Breton	11.0	10.1	0.9
Kitchener	10.4	9.8	0.7
Mississauga	10.1	9.6	0.5
Richmond Hill	9.8	9.5	0.3
Saanich	9.9	9.4	0.6
Markham	8.9	8.6	0.3
Nepean	8.9	8.5	0.5
Brampton	8.7	8.2	0.5
Oshawa	8.7	8.1	0.6
Thunder Bay	8.5	8.0	0.6
Vaughan	7.6	7.3	0.3
Cambridge	7.8	7.3	0.5
Gloucester	7.6	7.2	0.4
Oakville	7.0	6.7	0.3
Burlington	6.6	6.3	0.3

Note: Adjusted poverty rates assume a poverty rate 25% lower than the actual rate for workers with Skill Level I occupations.

Source: Prepared by the Canadian Council on Social Development using data from Statistics Canada's 1996 Census, custom tabulations.

A . 6 G L O S S A R Y

ABORIGINAL IDENTITY:

refers to those persons who identified with at least one Aboriginal group, (i.e., North American Indian, Métis or Inuit/Eskimo), those who reported being a Treaty Indian or a Registered Indian as defined by the *Indian Act of Canada*, or those who were members of an Indian Band or First Nation. This variable should not be confused with the ethnic origin variable (it only asks respondents about their cultural ancestry) which was often used to identify Aboriginal people in previous Censuses.

ANNUAL EMPLOYMENT ACTIVITY:

refers to the employment activity of a person aged 15 to 64, excluding institutional residents, based on their 1995 weeks of employment and whether their employment was mostly full-time or part-time. Employment refers to work for pay or in self-employment at all jobs held, even if only for a few hours, and includes paid vacation or sick leave with pay, or paid absence on training courses. *Full-year employment* refers to 49 to 52 weeks of employment; *part-year employment* refers to 1 to 48 weeks of employment. *Full-time employment* refers to 30 hours or more of employment most weeks; *part-time employment* refers to 1 to 29 hours of employment most weeks. In this report, *fully employed workers* refers to full-time, full-year workers.

CENSUS DIVISION (CD):

refers to areas established by provincial law that are intermediate geographic areas between the municipal (CSD) and provincial levels. In this report, *municipal regions*, *regional governments*, *regional districts* and *counties* refer to CDs.

CENSUS METROPOLITAN AREA (CMA) / CENSUS AGGLOMERATION (CA):

a CMA refers to an urban core, together with adjacent urban and rural areas that have high degrees of social and economic integration with the urban core. A CMA has an urban core population of at least 100,000, based on the previous Census. A CA is similar to a CMA, except that its urban core population is at least 10,000, based on the previous Census. In this report, *metropolitan areas* refer to CMAs and CAs.

CENSUS SUB-DIVISION (CSD):

refers to municipalities, as determined by provincial legislation. In this report, *large cities*, *central cities*, *metropolitan cities* and *cities* refer to CSDs with a population of 100,000 or those with a history as a central area in the CMA in which it is located.

CENSUS TRACT (CT):

refers to small geographic units representing urban or rural neighbourhood-like communities created in CMAs and CAs with an urban core of at least 50,000 population. CTs usually have populations ranging from 2,500 to 8,000. In this report, *neighbourhoods* refer to CTs.

HIGH-POVERTY NEIGHBOURHOOD:

refers to a CT with double the national family poverty rate.

CONCENTRATION OF POOR FAMILIES:

refers to the percentage of poor families that reside in high-poverty neighbourhoods.

DISABILITIES:

persons with disabilities are identified based on their responses to two Census screening questions: 1) Is this person limited in the kind or amount of activity that he/she can do because of a long-term physical condition, mental condition or health problem: a) at home? b) at school or work? c) in other activities, for example, in transportation to or from work, or in leisure time activities? 2) Does this person have any *long-term* disabilities or handicaps? In this report, *persons with activity limitations* refer to persons with disabilities.

DISTRIBUTION OF POOR:

refers to the share of the poor population in each category. For example, Table B1.1 in *Appendix B* shows that 34 per cent of poor unattached individuals in Canada were non-elderly women.

DISTRIBUTION OF TOTAL:

refers to the share of the total population in each category. For example, Table B1.1 in *Appendix B* shows that 32 per cent of all unattached individuals in Canada were non-elderly women.

EARNINGS:

refer to income received during 1995 by persons aged 15 and older as wages and salaries, net income from non-farm unincorporated business or professional practice, and net farm self-employment income. In this report, *annual earnings* or *employment income* refer to earnings.

EDUCATION LEVELS:

refer to *completed* degrees or diplomas. *Post-secondary degree or certificate* refers to completed university, college, technical institute or trade school programs. *Secondary certificate* refers to high school.

ELDERLY / NON-ELDERLY:

Non-elderly families or *working-age families* refer to families in which both the head of the family and the spouse are under 65 years of age. *Elderly families* refer to families in which either the head or spouse are aged 65 years and older. *Non-elderly unattached individuals* refer to individuals under 65 years of age. *Elderly unattached individuals* refer to individuals aged 65 years and older.

FAMILY:

refers to two or more household members who are related to each other by blood, marriage, common-law or adoption, constituting an economic family. *Couples with no children* refer to families headed by a married or common-law couple who have no children under the age of 18. *Couples with children* refer to families headed by a married or common-law couple and their children under the age of 18. *Lone-parent families* refer to families with one parent (either male or female) and their children under the age of 18. *All other families* refer to families headed by couples, lone parents, or non-parents living with relatives (other than children under the age of 18).

GOVERNMENT TRANSFER INCOME:

refers to income from all transfer payments received through federal, provincial or municipal governments during calendar year 1995. This variable is derived by adding the amounts received from the Old Age Security (OAS) pension and Guaranteed Income Supplement (GIS); benefits from Canada or Quebec Pension Plans (C/QPP); benefits from Employment Insurance (EI); and federal Child Tax benefits (CTB). This source also includes social assistance payments (SA or welfare) received by persons in need, such as mothers with dependent children, persons temporarily or permanently unable to work, elderly individuals, and persons with disabilities. It also includes provincial income supplement payments to the elderly and provincial payments to the elderly to help offset accommodation costs; other transfer payments such as payments received from training programs sponsored by the federal and provincial governments, TAGS payments for employees in the fishing industry, regular payments from provincial automobile insurance plans, veterans' pensions, war veterans' allowances, pensions to widows and dependants of veterans, workers' compensation payments; and any amounts received in 1995 for refundable provincial tax credits and federal goods and services tax credits.

HOUSEHOLD:

refers to both economic families and unattached individuals. This definition allows for more than one unattached individual or economic family to live in the same dwelling, but treats them as separate households in the report.

IMMIGRANT:

refers to a person who is, or has been, a landed immigrant in Canada. A landed immigrant is a person who has been granted the right to live in Canada permanently by immigration authorities. It includes immigrants of any class, including refugees. Most immigrants are born outside of Canada, but a small number were born in Canada. Children born in Canada to immigrant parents are considered to be non-immigrants. In this report, *foreign-born* refers to all immigrants. *Recent immigrants*, *new immigrants* or *newcomers* refer to persons who gained landed immigrant status between 1991 and 1996. Immigrants do not include non-permanent residents.

INCOME DEFICIENCY:

refers to the dollar amount that a household's income falls below the LICO, such as in poverty gap or market gap measures.

LABOUR FORCE:

refers to persons aged 15 and older who were either employed or unemployed during the week prior to the survey date. It does not include persons who were not actively seeking employment.

LOW INCOME CUT-OFFS (LICOS):

refers to Statistics Canada's measure of low income based on income and family expenditure patterns. In this report, the LICO is used to define households and persons in poverty. See *Introduction* and *Appendix A.1* for more details.

MARKET INCOME:

refers to a household's total income minus all government transfers.

MARKET POOR / POVERTY:

Market poor refers to households with market incomes below the LICO. *Market gap* refers to the dollar amount between a market poor household's market income and the LICO.

NATIONAL URBAN INCOME CUT-OFFS:

refer to common benchmarks used to explore the distribution of incomes in each city. The cut-offs are based on thresholds that divide households in all CMAs into five equal groups by their incomes. See *Chapter 4* for more details.

NEIGHBOURHOOD POVERTY RATE:

refers to the percentage of all families in a CMA that reside in high-poverty census tracts.

NON-PERMANENT RESIDENTS:

refer to persons residing in Canada without Canadian citizenship. This category includes foreign students, foreigners with employment authorization or Minister's permits, and refugee claimants plus their families. Immigrants do not include non-permanent residents.

OCCUPATIONAL SKILL LEVEL:

based on the 1991 Standard Occupational Classifications (SOC), refers to the skill level involved in the kind of work persons were doing during the week prior to Census Day, based on the respondent's description of their most important duties on the job, excluding institutional residents. For persons without a job during the week prior to enumeration, these data relate to their job of longest duration since January 1, 1995. The skill level variable has four categories: *Skill level IV* includes senior managers, middle and other managers, and professionals; *Skill level III* includes semi-professionals and technicians, supervisors, foremen/women, administrative and senior clerical, sales and service, and skilled crafts and trades; *Skill level II* includes clerical workers, sales and service, and semi-skilled manual workers; and *Skill level I* includes sales and service, and other manual workers. In this report, *high-skilled occupations* refer to occupations at Skill levels III and IV; *low-skilled occupations* refer to occupations at Skill level I.

OTHER INCOME:

refers to all income garnered from sources other than earnings or government transfers.

PARTICIPATION RATE:

refers to the labour force expressed as a percentage of the total population aged 15 and older, excluding institutional residents.

PEARSON CORRELATION ANALYSIS:

refers to a statistical technique that shows the degree of association between variables. In this report, it is used to show the strength of the relationship between the proportion of a selected group in a city population and that city's poverty rate. See *Appendix A.4* for more details.

POOR / POVERTY:

Poor refers to persons in households with incomes below Statistics Canada's Low Income Cut-offs (LICOs). *Poverty line* refers to the LICO threshold amounts. *Poverty rate* or *incidence of poverty* refers to the proportion of the population living in households with incomes below the LICO. *Poverty gap* refers to the dollar amount difference between a household's total income and the LICO.

POVERTY RATE RANGE LEVELS:

refer to a classification of poverty rates for a selected population group in each city. Mid-range (M) rates were equal to plus or minus 25% of the all-city mean rate for the population group. High-range (H) rates were anything above plus 25% of the mean rate; low-range (L) rates were anything below minus 25% of the mean rate. See *Chapter 2: Summary* for more details.

REMAINDER OF CMA:

refers to areas in any given CMA outside of large cities but still within the metropolitan area.

SOURCES OF INCOME:

refer to the origins of household income. This report examined earnings from the paid labour market, government transfer income from any level of government, and other income from unspecified sources.

STANDARDIZATION TECHNIQUE:

refers to an exercise that controls for the influence of population composition (by selected characteristics) on city poverty rates by applying a uniform distribution of population characteristics to all cities. See *Chapter 5* for more details.

TARGETED POVERTY REDUCTION TECHNIQUE:

refers to an exercise that reduces the poverty rate among selected high-poverty groups by 25 per cent, then recalculates the city poverty rate based on this change. See *Chapter 5* for more details.

TOTAL INCOME:

refers to total annual household income from all sources.

UNATTACHED INDIVIDUAL:

refers to a person living alone or in a household where he/she is not related to other household members. In this report, *single persons* refer to unattached individuals.

UNEMPLOYED PERSONS:

refer to persons who, during the week prior to enumeration: a) were without work, had actively looked for work in the previous four weeks and were available for work; or b) were on lay-off but expected to return to their job and were available for work; or c) had definite arrangements to start a new job within four weeks or less and were available for work.

Appendix A:
Supporting
Material

URBAN NON-CMA:

refers to urban areas that are not CMAs.

VISIBLE MINORITIES:

refer to persons (other than Aboriginal persons), who are non-Caucasian in race or non-white in colour. This information was collected through the population group question in the Census to inform programs under the Employment Equity Act (1986).

WORKFORCE:

also known as *experienced labour force*, refers to persons who, during the week prior to Census Day, were employed or unemployed but who had worked since January 1, 1995.

WORKING-AGE PERSONS:

refers to persons between the ages of 15 and 64.

A . 7 B I B L I O G R A P H Y

- Banting, Keith G., Charles M. Beach, and Gordon Betcherman. "Polarization and Social Policy Reform: Evidence and Issues," in Keith Banting and Charles M. Beach, eds., *Labour Market Polarization and Social Policy Reform*. Kingston: School of Policy Studies, Queen's University, 1995.
- Bourne, L.S. "Reinventing the Suburbs: Old Myths and New Realities," in D.R. Diamond and B.H. Massam, eds., *Progress in Planning*, Vol. 46, Part 3, 1996.
- Bourne, L.S. *Social Inequalities, Polarization and the Redistribution of Income Within Cities: A Canadian Example*. National Key Centre for Social Applications of GIS, Monograph Series 2, 1997.
- Bourne, L.S. and Mark R. Flowers. *The Canadian Urban System Revisited: A Statistical Analysis*. Toronto: Centre for Urban and Community Studies, University of Toronto, Research Paper 192, 1996.
- Burke, Mary Anne. "Urban Canada," in *Canadian Social Trends*, Winter 1987, Statistics Canada Catalogue No. 11-008-XPE, pp. 12-18, 1987.
- Citizenship and Immigration Canada. *Facts and Figures 1996: Immigration Overview*. Ottawa: Minister of Supply and Services Canada, 1997.
- Canadian Council on Social Development. *Women and Pensions Fact Sheets*. Ottawa: CCSD, 1996.
- Canadian Council on Social Development. *CCSD's Response to the 1997 Federal Budget*. Ottawa: CCSD, March 1997.
- Canadian Council on Social Development. *Personal Security Index 1999: How confident are Canadians about their economic and physical well-being?* Ottawa: CCSD, 1999.
- Canadian Council on Social Development. *Will the 1998 Federal Budget Bring Down Canada's Social Deficit?*, Position Paper. Ottawa: CCSD, March 1998.
- Chéal, David. *New Poverty: Families in a Postmodern Society*, Contributions in Sociology, No. 115. Connecticut: Greenwood Press, 1996.
- Clark, Christopher. *Canada's Income Security Programs*. Ottawa: Canadian Council on Social Development, 1998.
- Coffey, William J. and Richard G. Shearmur. *Employment Growth and Change in the Canadian Urban System, 1971-94*. Working Paper No. W/02/. Toronto: Canadian Policy Research Networks Inc., 1997.
- Dooley, Martin D. "The Demography of Child Poverty in Canada: 1973-1986," in *Canadian Studies in Population*, Vol. 18 (1), pp. 53-74, 1991.
- Drieger, Leo. *The Urban Factor: Sociology of Canadian Cities*. Toronto: Oxford University Press, 1991.
- Edwards, R. Gary and John Hughes. *The Gallup Poll*, Vol. 57, No. 26, May 13, 1997.
- Fawcett, Gail. *Living with Disability in Canada: An Economic Portrait*. Hull: Human Resources Development Canada, 1996.
- Finnie, Ross. "Stasis and Change: Trends in Individuals' Earnings and Inequality in Canada, 1982-92," in *Canadian Business Economics*, Fall 1997, pp. 84-107, 1997.

Fong, Eric and Kumiko Shibuya. "The Spatial Separation of the Poor in Canadian Cities." University of Toronto, unpublished, 1998.

Furrie, Adele D. *Comparison of the Results from the 1986 Census and the Health and Activity Limitation Survey for Persons with Disabilities Residing in Households*. Ottawa: Statistics Canada, 1989.

Gingras, Yves and Daniel Boothby. *Have the Labour Market Conditions of Low-Skilled Workers Worsened in Canada?* Research Paper R-99-1E. Ottawa: Applied Research Branch, Strategic Policy, Human Resources Development Canada, December 1998.

Golden, Anne; Jack Diamond; Thomas W. McCormack; J. Robert S. Prichard; and Joseph Y. K. Wong. *Greater Toronto Area Task Force (Ont.)*. Toronto: Queen's Printer for Ontario, 1996.

Grenon, Lee. "Are service jobs low-paying?" in *Perspectives on Labour and Income*, Catalogue No. 75-001-XPE, pp. 29-34, 1996.

Hajnal, Zoltan L. "The Nature of Concentrated Urban Poverty in Canada and the United States," in *Canadian Journal of Sociology*, Vol. 20, No. 4, Fall 1995.

Hatfield, Michael. *Concentrations of Poverty and Distressed Neighbourhoods in Canada*. Working Paper Series, No. W-97-1E. Ottawa: Applied Research Branch, Strategic Policy, Human Resources Development Canada, 1997.

Henry, Frances and E. Ginzberg. *Who gets the work? A test of discrimination in employment*. Toronto: Urban Alliance on Race Relations and Social Planning Council of Toronto, 1984.

Henry, Frances; Carol Tator; Winston Mattis; and Tim Rees. *The Colour of Democracy: Racism in Canadian Society*. Toronto: Harcourt Brace & Company, Canada, 1995.

Human Resources Development Canada. *1997 Employment Insurance Monitoring and Assessment Report*. Ottawa: Minister of Public Works and Government Services Canada, 1997.

Infantry, Ashante. "Opportunity knocks...but not for all," feature for "Beyond 2000: Home to the World" in *The Toronto Star*, May 2, 1999.

Jargowsky, Paul A. *Poverty and Place: Ghettos, Barrios and the American City*. New York: Russell Sage Foundation, 1996.

Krahn, Harvey. "Non-standard work on the rise," in *Perspectives on Labour and Income*, Winter 1995, Catalogue No. 75-001-XPE, pp. 35-42, 1995.

Kunz, Jean and Grant Schellenberg. *Youth at Work in Canada: A research report*. Ottawa: Canadian Council on Social Development, 1998.

Lake, Robert W. *A Publication of the Center for Urban Policy Research*, Vol. 9, No. 1, Spring 1998.

Langlois, Claude and Craig Dougherty. *Preliminary Profile of Immigrants Landed in Canada Over the 1980 to 1994 Period*. Ottawa: Citizenship and Immigration Canada, 1997.

Ley, David and Heather Smith. *Is there an immigrant "underclass" in Canadian cities?* Vancouver Centre of Excellence, Research on Immigration and Integration in the Metropolis, Working Paper Series #97-08, 1997.

Lochhead, Clarence and Richard Shillington. *A Statistical Profile of Urban Poverty*. Ottawa: Canadian Council on Social Development, 1996.

MacLaughlan, Ian and Ryo Sawada. "Measures of Income Inequality and Social Polarization in Canadian Metropolitan Areas," in *The Canadian Geographer*, Vol. XLI, No. 4, pp. 377-397, 1997.

Martin Spigelman Research Associates. *Unfulfilled Expectations, Missed Opportunities: Poverty among Immigrants and Refugees in British Columbia*. Vancouver: Ministry Responsible for Multiculturalism and Immigration, Immigration Policy, Planning and Research Division, October 1998.

Massé, Philippe, Richard Roy and Yves Gingras. *The Changing Skill Structure of Employment in Canada*. Research Paper R-99-7E. Ottawa: Applied Research Branch, Strategic Policy, Human Resources Development Canada, November 1998.

Massey, Douglas S., Andrew B. Gross and Mitchell L. Eggers. "Segregation, the Concentration of Poverty, and the Life Chances of Individuals," in *Social Science Research*, Vol. 20, pp. 397-420, 1991.

Morissette, René and Charles Bérubé. *Longitudinal Aspects of Earnings Inequality in Canada*. 11F0019MPE, No. 94. Ottawa: Statistics Canada, July 1996.

National Council of Welfare. *Poverty Profile 1980-1990*. Ottawa: Minister of Public Works and Government Services Canada, 1992.

National Council of Welfare. *Poverty Profile Update for 1991*. Ottawa: Minister of Public Works and Government Services Canada, 1993.

National Council of Welfare. *Poverty Profile 1992*. Ottawa: Minister of Public Works and Government Services Canada, 1994.

National Council of Welfare. *Poverty Profile 1993*. Ottawa: Minister of Public Works and Government Services Canada, 1995.

National Council of Welfare. *Poverty Profile 1994*. Ottawa: Minister of Public Works and Government Services Canada, 1996.

National Council of Welfare. *Poverty Profile 1995*. Ottawa: Minister of Public Works and Government Services Canada, 1997.

National Council of Welfare. *Welfare Incomes 1996*. Ottawa: Minister of Public Works and Government Services Canada, 1997.

National Council of Welfare. *Poverty Profile 1996*. Ottawa: Minister of Public Works and Government Services Canada, 1998.

National Council of Welfare. *A New Poverty Line: Yes, No or Maybe? A Discussion Paper*. Ottawa: Minister of Public Works and Government Services Canada, 1999.

Noreau, Nathalie. "Involuntary part-timers," in *Perspectives on Labour and Income*, Catalogue No. 75001E, pp. 25-30, Autumn 1994.

Pendakur, Krishna and Ravi Pendakur. *The Colour of Money: Earnings Differentials Among Ethnic Groups in Canada*. Ottawa: Strategic Research and Analysis, Social Research Group, Canadian Heritage, 1996.

Phipps, Shelley A. and Peter S. Burton. "Sharing within Families: Implications for the Measurement of Poverty Among Individuals in Canada," in *Canadian Journal of Economics*, XXVII, No. 1, 1993.

Picot, Garnet. "What is Happening to Earnings Inequality in Canada in the 1990s?" in *Canadian Business Economics*, Fall 1997, pp. 65-83.

Ross, David and Paul Roberts. *Income and Child Well-being: A New Perspective on the Poverty Debate*. Ottawa: Canadian Council on Social Development, 1999.

Ross, David P., Katherine J. Scott, and Peter J. Smith. *The Canadian Fact Book on Poverty 2000*. Ottawa: Canadian Council on Social Development, forthcoming.

Royal Commission on Aboriginal Peoples. *Aboriginal Peoples in urban centres: Report of the National Round Table on Aboriginal Urban Issues*. Ottawa: Minister of Supply and Services, 1993.

Schellenberg, Grant. *The Changing Nature of Part-time Work*, Social Research Series Paper No. 4. Ottawa: Canadian Council on Social Development, 1997.

Scott, Katherine and Clarence Lochhead. *Are Women Catching up in the Earnings Race?* Social Research Series Paper No. 3. Ottawa: Canadian Council on Social Development, 1997.

Statistics Canada. *1991 Census Dictionary*. Catalogue No. 92-301E. Ottawa: Industry Canada, 1992.

Statistics Canada. *1996 Census Dictionary*, Catalogue No. 92-351-XPE. Ottawa: Industry Canada, 1997.

Statistics Canada. *1991 Census Public Use Microdata File Individuals: Data Documentation*, Service No. 48-039E. Ottawa: Minister of Industry, Science and Technology, 1994.

Statistics Canada. "Minimum wage workers," in *Labour Force Update*, Catalogue No. 71-005-XPB, Summer 1998, Vol. 2, No. 3, 1998.

Statistics Canada. "Census: Marital status, common-law unions and families," in *The Daily*, October 14, 1997.

Statistics Canada. "1996 Census: Immigration and citizenship," in *The Daily*, November 4, 1997.

Statistics Canada. "1996 Census: Aboriginal data," in *The Daily*, January 13, 1998.

Statistics Canada. "1996 Census: Ethnic origin, visible minorities," in *The Daily*, February 17, 1998.

Statistics Canada. "1996 Census: Education, mobility and migration," in *The Daily*, April 14, 1998.

Statistics Canada. "1996 Census: Sources of income, earnings and total income, and family income," in *The Daily*, May 12, 1998.

Sunter, Deborah and Geoff Bowlby. "Labour force participation in the 1990s," in *Perspectives on Labour and Income*, Catalogue No. 75001E, pp. 15-21, Autumn 1998.

Sunter, Deborah and René Morissette. "The hours people work," in *Perspectives on Labour and Income*, Catalogue No. 75001E, pp. 8-13, Autumn 1994.

Toronto, Mayor's Homelessness Action Task Force. *Taking Responsibility for Homelessness: An Action Plan for Toronto*. Report of the Mayor's Homelessness Action Task Force City of Toronto, January 1999.

Vanier Institute of the Family. *Profiling Canada's Families*. Ottawa: Vanier Institute, 1994.

Vanier Institute of the Family. *From the Kitchen Table to the Boardroom Table: The Canadian Family and the Work Place*. Ottawa: Vanier Institute, 1998.

Van Kempen, Eva T. "The Dual City and the Poor: Social Polarization, Social Segregation and Life Chances," in *Urban Studies*, Vol. 31, No. 7, pp. 995-1015, 1994.

Wilson, William J. *The Truly Disadvantaged: The Inner City, the Underclass and Public Policy*. Chicago: The University of Chicago Press, 1987.

STATISTICAL PROFILES OF
URBAN AREAS

Appendix

B

Urban
Poverty in
Canada

A STATISTICAL PROFILE